

# 30 kHz – 2.5 GHz, 10 A, 450 V High Current Bias Tee BT-10450A

Advanced TLP/HMM/HBM Solutions



## 1 Features

- High current 30 kHz – 2.5 GHz (–1 dB) bias tee
- Suitable for 80 A TLP, VF-TLP and HMM
- DC input bias current: max. 2 A DC and max. 10 A DC pulsed at 100 ms pulse width and 1% duty cycle
- Up to 450 V bias voltage at DC input
- Typ. 0.4 Ω DC resistance (port 3 to port 2)
- 50 Ω pulse input and 50 Ω DC/pulse output
- BNC DC input
- Size: 112 mm x 60.5 mm x 31 mm
- **Lab safety requirement: interlock operation above an operation voltage of 40V needed to avoid life-endangerment risks.**

## 2 Description

The BT-10450A is used for DC biased TLP or VF-TLP measurements. The DC voltage or current is applied to the DC input (port 3). The TLP output (pulse force) is connected to the pulse input (port 1). The DUT or DUT pulse force line is connected to the DC/pulse output (port 2). The BT-10450A features a very low cut-off frequency of 30 kHz at high bandwidth of 2.5 GHz. Fig. 1 shows the schematic diagram.

### 2.1 Electrical Characteristics

Fig. 2 shows the typical step response from port 1 to port 2 at 300 ps input pulse rise time. The time delay of the output signal is about 0.53 ns.

Fig. 3 shows the typical insertion loss from port 1 to port 2.

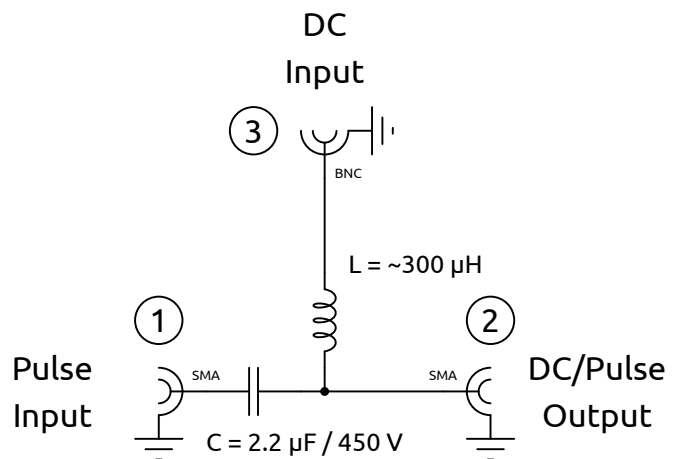


Figure 1: Schematic diagram

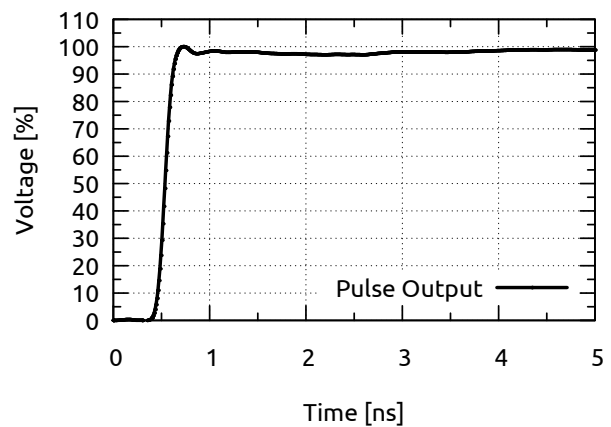


Figure 2: Typical measured step response of the bias tee at the pulse output (port 2) with input pulse rise time of 300 ps at the pulse input (port 1).

# 30 kHz – 2.5 GHz, 10 A, 450 V High Current Bias Tee BT-10450A

Advanced TLP/HMM/HBM Solutions

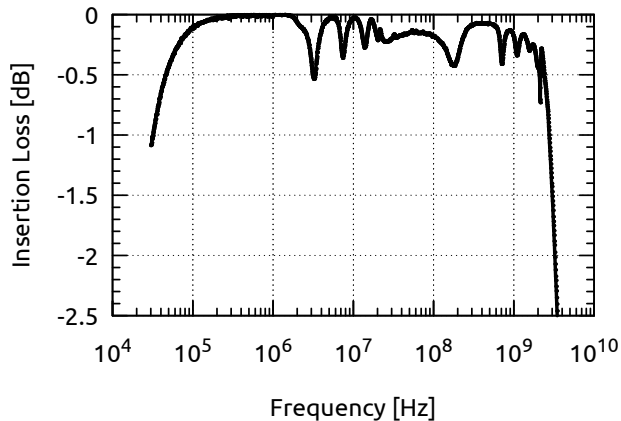


Figure 3: Typical insertion loss: pulse input to DC/pulse output in [dB]. Measurement condition: DC input port 3 terminated with 50 Ω.

## 2.2 Laboratory Safety Requirement

Interlock operation above an operation voltage of 40V needed to avoid life-endangerment risks.

## Physical Dimensions

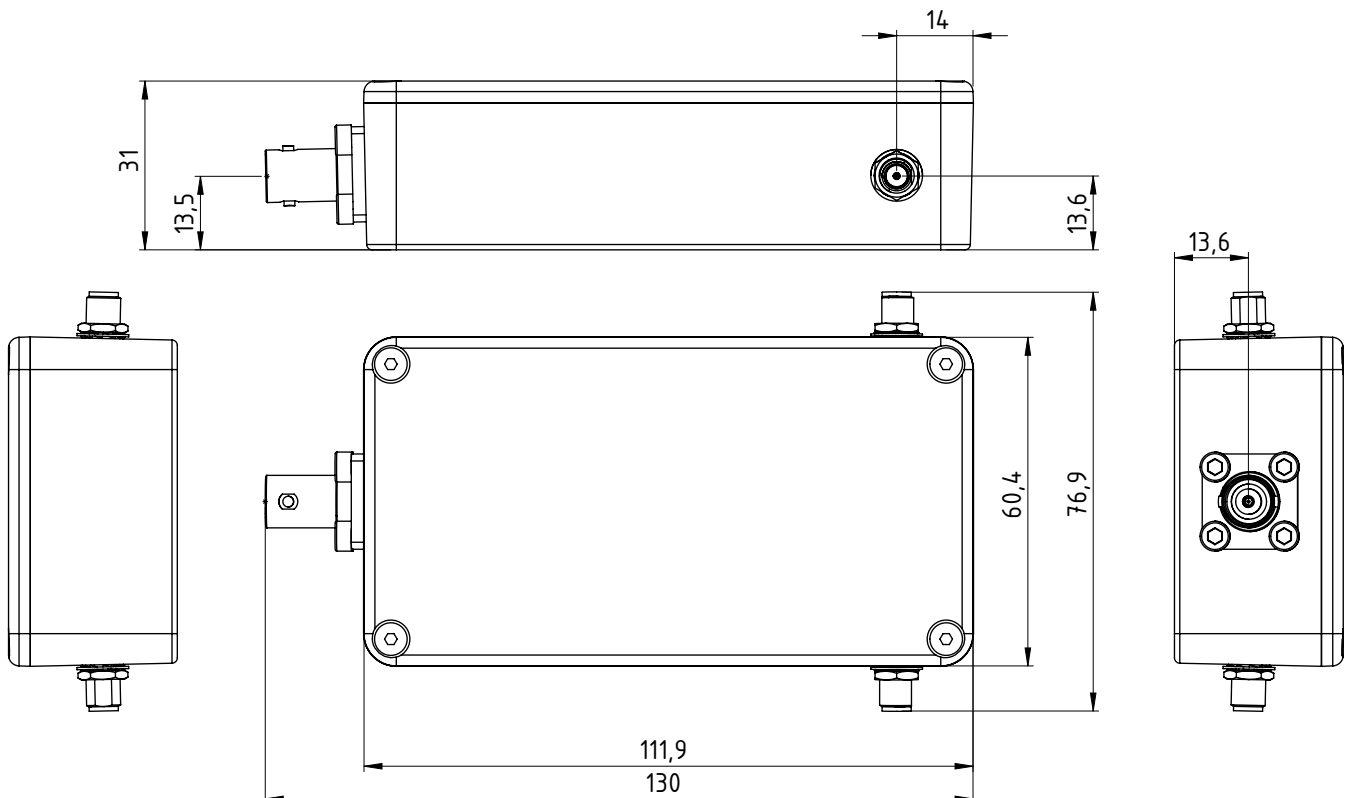


Figure 4: Physical dimensions of the BT-10450A in [mm]

## 3 Ordering Information

Pos.	Description	Part No.
01	30 kHz – 2.5 GHz, 10 A, 450 V High Current Bias Tee	BT-10450A

### General

The product data contained in this data-sheet is exclusively intended for technically trained staff. You and your technical departments will have to evaluate the suitability of the product for the intended application and the completeness of the product data with respect to such application. Our products are solely intended to be commercially used internally and should not be sold to consumers. This data-sheet is describing the specifications of our products for which a warranty is being granted by HPPI GmbH. Any such warranty is granted exclusively pursuant the terms and conditions of the respective supply agreement. There will be no guarantee of any kind for the product and its specifications. For further information on technology, specific applications of our product, delivery terms, conditions and prices please contact HPPI:

High Power Pulse Instruments GmbH  
 Stadlerstrasse 6A  
 D-85540 Haar, Germany  
 Phone : +49 (0)89 8780698 - 440  
 Fax : +49 (0)89 8780698 - 444  
 E-Mail : info@hppi.de

Due to technical requirements our products and/or their application may be harmful. For information please read carefully the manual or contact HPPI. Safety notes in the manual will inform you about possible risks that result from any foreseeable application of our products. Changes of this data-sheet are reserved.